



**6184 Lourdes Terrace, San Diego, CA 92120**

## **VIRTUAL MEDIA SHOWCASE**



**3,100 SF | 4 BEDS PLUS BONUS RM | 3 BATHS | Del Cerro**

**OFFERED AT: \$1,299,000** | This Del Cerro showstopper on 11,935 SF private corner lot beautifully landscaped with enchanting sunset views will steal your heart. Flexible floor plan with downstairs BD/BA, massive living room with fireplace, bonus room as office/playroom/gym. Kitchen boasts granite counters, stainless steel appliances, ample storage space. Incredible master suite with walk-in closet and completely re-envisioned stunning bath with soaking tub, dual sink vanity, custom tiled shower, just gorgeous! Fresh interior paint, upgraded lighting and so much more!

**PROPERTY LIFESTYLE VIDEO** <https://vimeo.com/552525928/ec21121bf0>

Watch this 2 minute video which showcases the highlights of this beautiful residence and the surrounding community. Turn on the sound and enjoy.

**3D VIRTUAL TOUR - Click here** <https://my.matterport.com/show/?m=DVC3Moio4ud>

Come inside to virtually tour the home at your own pace from the privacy and comfort of your device. It's easy and fun! Click the link and you are transported to the living room. Click the white circles, or click-drag your mouse to move anywhere throughout the house and outside. Click on the "360" circles to go outside and click the "walking man" circles to navigate back into the property.

### **PHOTOS**

<https://www.dropbox.com/sh/c0s8w4kpg7wl4wt/AABayPYSvDK9pk5yUCQymIuha?dl=0>

Browse through beautiful property photos.

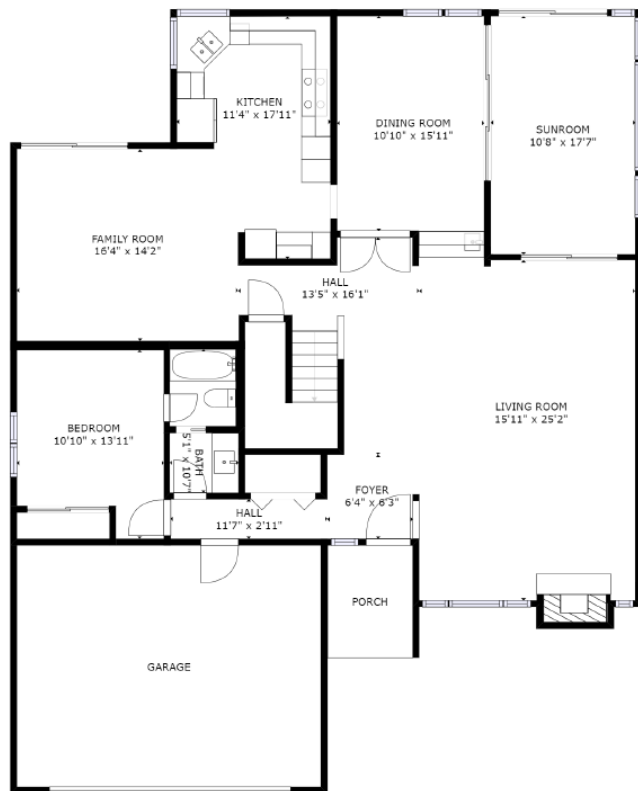
*Continued on next page*

## **MORE ABOUT THIS RESIDENCE | 6184 Lourdes Terrace, San Diego, CA 92120**

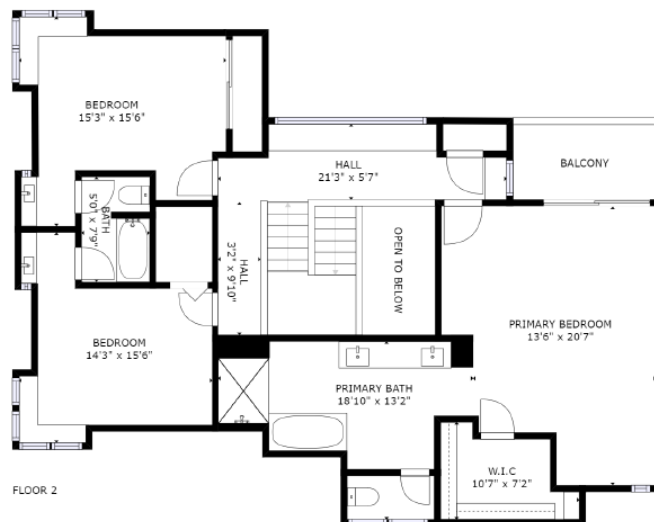
You do not want to miss out on this spectacular Del Cerro residence on a nearly 12,000 SF premium corner lot with westerly views that capture the hills in the distance and incredible sunsets. Custom paver driveway and walkway welcomes you from the street to the new front door. You will notice how the drought tolerant landscape and low maintenance synthetic turf blend into the natural hillside plantings and trees that wrap the corner of the lot perfectly. Walk through the front door onto travertine tile floors which extend through the massive front living room with stacked stone tiled fireplace, through to the formal dining room with wet-bar and additional storage, and into the kitchen. The kitchen cabinetry was refreshed providing ample storage along with granite countertops, custom stone tiled backsplash, and stainless steel appliances. Convenient family room offers an additional space to relax with friends and family with access to the rear yard through the dual pane slider. Custom paver flooring in the rear yard with pygmy palms dotting the perimeter and the drought tolerant landscaping allow you to take in views to the west with plenty of space to enjoy our Southern California weather. A bonus room off the dining area allows for another creative space that can be utilized as a home office/playroom/gym. Coveted downstairs bedroom shares the full bathroom off the hallway. Convenient tucked away full size washer and dryer off the hallway closet and easy access to your 2-car attached garage with additional storage options. The entire home was freshly painted in a bright neutral tone, along with updated lighting fixtures and ceiling fans, new carpet downstairs, and new laminate floors on the second floor. Head upstairs and down the hallway to the luxurious master suite with vaulted ceilings, private balcony taking in those views and a spacious walk-in closet. The master bathroom was completely re-envisioned allowing for a beautiful custom dual sink vanity with quartz counters, separate soaking bathtub with herringbone tiled accent wall, and gorgeous tiled shower enclosure. A true spa-like experience. Two additional spacious secondary bedrooms upstairs share the jack and jill bathroom which features new vanities with granite countertops and upgraded lighting fixtures. Awesome location with incredible schools (Hearst Elementary, Lewis Middle, Patrick Henry HS), easy freeway access and close to shopping and dining options. This is a must see!

***Continued on next page***

FLOOR PLAN | 6184 Lourdes Terrace, San Diego, CA 92120



FLOOR 1



FLOOR 2

GROSS INTERNAL AREA  
FLOOR 1: 1728 sq. ft, FLOOR 2: 1192 sq. ft  
TOTAL: 2920 sq. ft  
SIZES AND DIMENSIONS ARE APPROXIMATE, ACTUAL MAY VARY.





*Listing Agent: Darin Triolo, Realtor | President, DRE #01376927*

*call/txt 619-804-5686 | [darin@triolorealty.com](mailto:darin@triolorealty.com) | [www.triolorealty.com](http://www.triolorealty.com)*

*Keller Williams Realty, Broker DRE #01524589*